



Welcome to Trumbull, Connecticut

County: Fairfield
Population: 35,047
Square Miles: 23.5
Government: Selectman
Distance to Major Cities:
Boston: 136 miles
Hartford: 48 miles
New York City: 54 miles



Once a rural agricultural community, Trumbull, CT retains its colonial New England charm and now presents an attractive place to call home. RelocateAmerica.com ranked Trumbull as one of the top 100 Best Cities to Live in the U.S., and Money Magazine ranked Trumbull # 68 in their top 100 Best Places to Live ranking of U.S. cities in 2007. Trumbull is located within easy access to Route 8, Route 25, Interstate 95, and the Merritt Parkway.

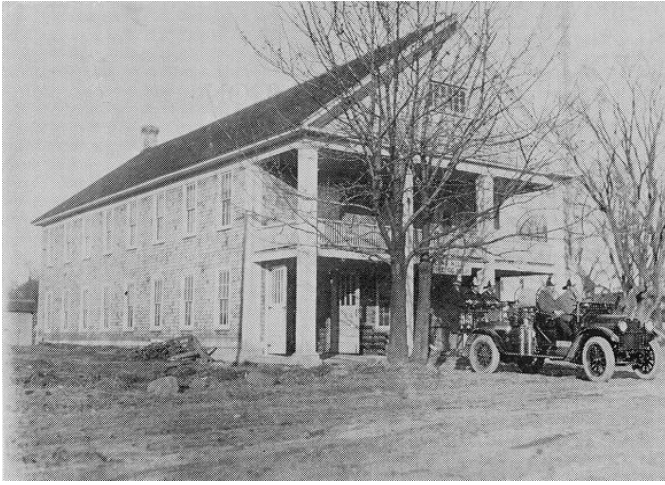
Trumbull real estate is diverse and made up of many charming neighborhoods, including Nichols which includes the Nichols Farms Historic District where you will find many lovely historic homes. Trumbull offers 1,600 acres of preserved land and public parks providing ample open space for outdoor pleasure.

- The Tashua Recreation Facility includes basketball, tennis, pool, playground, and picnic areas, as well as Tashua Knolls, an 18 hole golf course.
- Indian Ledge Park is more than 100 acres in size and includes a softball field, soccer and lacrosse fields, a BMX racing track, bocce courts, picnic areas and an amphitheater with a band shell cover. Each year the town hosts a large concert and in 2010 the popular band "Train" performed for a packed house.

Trumbull offers an array of shopping opportunities, from the Town Center and its shops, local restaurants and the local Starbucks. Two major shopping areas include Westfield Trumbull Mall, where you will find over 180 stores, including Macy's, Lord & Taylor, Banana Republic, Talbott's and Target, and Hawley Lane Mall with stores such as Best Buy, Target and Kohl's. Trumbull also offers corporate and industrial parks which Unilever, CooperSurgical, United Healthcare and Sikorsky Aircraft, Group call home.

In 1989 the National Little League of Trumbull defeated Taiwan to win the Little League World Series. Trumbull native and resident Chris Drury, who is now Captain of the NHL New York Rangers and a Stanley Cup winner, was a member of that winning team. Also, along with a few of his teammates they are the owners of Colony Pizza in Fairfield and Milford.

Trumbull offers a wealth of real estate opportunities for the future, whether you are a savvy investor or a first time home buyer stop in to our office and let us help you with your real estate needs.



The Old Long Hill Firehouse 1920



Ephraim Hawley House Before 1881

Trumbull, CT History

The territory of Trumbull was originally entirely a part of Stratford, settled in 1639, and was owned by Stratford inhabitants eighty six years before the first village within Trumbull, called Unity, was set-off in 1725. Hence, all of Trumbull's early history and public records are intermingled with those of the town of Stratford. After the Revolutionary War, citing their well-established population and the inconvenient distance to attend town meetings in Stratford, they petitioned the Connecticut General Assembly for status as an incorporated town. After several denials, the legislature granted their petition in October, 1797. On November 20, 1797, the first town meeting was held. The new town was named for Jonathan Trumbull, Connecticut governor during the Revolutionary War and a valued advisor to George Washington.



Trumbull National Guard 1868



Unity Burial Ground established 1730