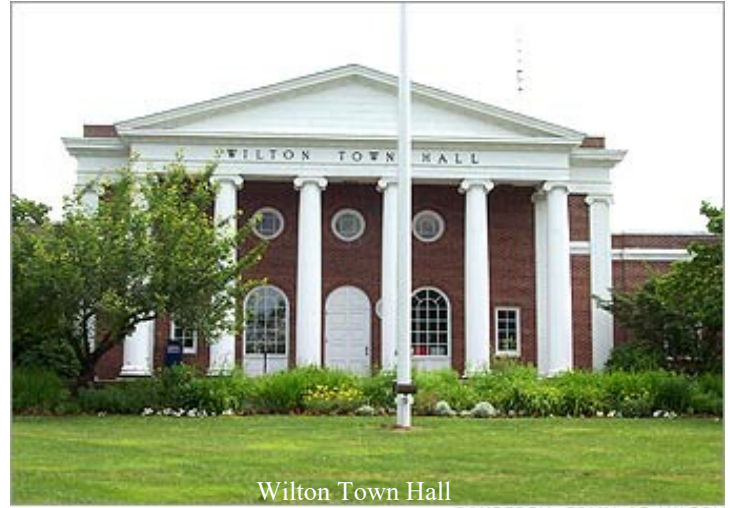




Welcome to Wilton, Connecticut

County: Fairfield
Population: 17,762
Square Miles: 27
Government: Selectman
Distance to Major Cities:
Boston: 148 miles
Hartford: 57 miles
New York City: 43 miles



Wilton Town Hall

COURTESY: TOWN OF WILTON

Wilton, CT is nestled in the Norwalk River Valley and located along Connecticut's Gold Coast. It is a quaint New England town with the convenience of suburban living and in-town sophistication and is one of the most affluent communities in the United States. CNN Money voted Wilton one of the "Best Places to Live" in the United States.

Wilton is a town of steady growth yet with long-range plans to preserve its character and continually enhance the quality of life for residents. Wilton has more than 500 restored 18th- and 19th-century homes that have been preserved in the town's many historic districts like Cannondale, Georgetown or Wilton Center. Cannondale is also home to the Metro-North Railroad station that makes New York City and Stamford, CT easily accessible. The Route 7 Connector links Wilton drivers to both the Merritt Parkway and Interstate 95.

The town's real estate offers a variety of styles and architecture throughout town; most residential properties are zoned for 2 acres. Wilton's charming town center offers several local restaurants, boutiques and retail stores. The center also consists of the town library, post office, movie theater and the bustling Village Market. In Georgetown and Cannon Crossing you will find many unique boutiques and antique shops for an afternoon of shopping. Wilton offers its residents an award winning school district, and both indoor and outdoor recreational facilities. Town recreational facilities include several tennis courts and numerous playing fields. The Wilton Family YMCA offers programs year round.

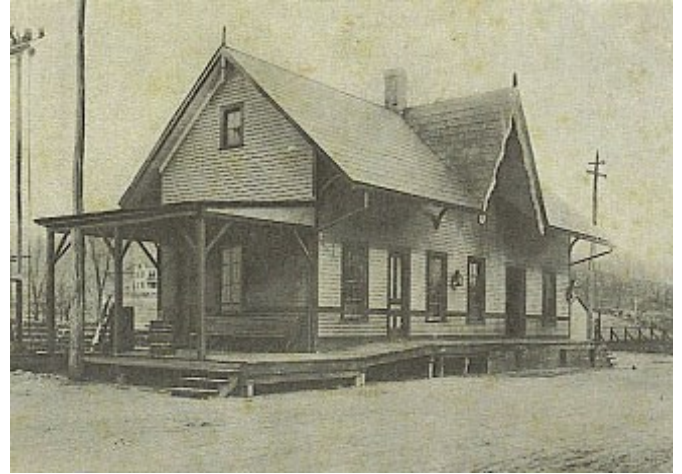
Visitors to Wilton can visit The Weir Farm National Historic Site, Connecticut's first and only National park area that served as the summer home and studio of prominent American impressionist J. Alden Weir (1852-1919). Today many artists actively come to interpret the landscape in their art medium. There is also the Wilton Heritage Museum c.1756 a classic center-chimney house, with period rooms furnished to show changes in the cultural life of local citizens from 1750 to 1850.

The Route 7 corridor is home to many corporate headquarters such as Melissa and Doug, ASML, Breitling, HEI Hotels and Resorts, Nielsen Research and Beiersdorf Inc. Many other New York City and Danbury area professionals are thrilled to call Wilton home.

Let our Wilton agents show you around this beautiful community!



Cannondale School building (1872)



Wilton's first railroad station, built in 1852.

Wilton, CT History

Wilton is a rural residential town rich in New England history. The first written records of the areas that are now Wilton date back to 1640, when Roger Ludlow and his friends purchased land from the Indians between Norwalk and Saugatuck Rivers and “a day’s walk into the country.” This land was called Norwalk.

The coming of the railroad in 1852 did not bring many advantages to a community of home industry and farming; instead it offered easy access to the bountiful western lands. After the Civil War, Wilton’s population declined as cities grew, industrialization increased, the market for home products dropped and farms were abandoned. About 30% of the population was lost between 1860 and 1900. By 1900, the census showed only 1,598 people living in Wilton.



Weir Farm National Historic Site